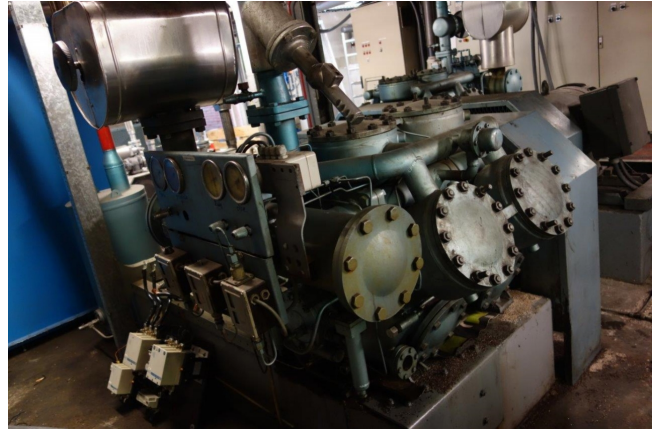


Grasso K4020x110

Specifications

Brand	Grasso
Type	K4020x110
Refrigerant	NH 3 (ammonia)
kW at 0°C/+40°C	662,7
kW at -5°C/+40°C	532
kW at -10°C/+40°C	418,4
Unloaded Start	✓
Capacity Control	✓
On steel base frame	✓
Pressure safety switches	✓
Hp/Lp/Op	
Pressure gauges	✓
Hp/Lp/Op	
Oil separator	✓
Remarks	Including Electromotor // Pulley Compr: 720 // Capacity based on Grasso RC 611
Sizes	1600x1100x1300 mm (LxWxH)
Stock	1



Description

Used Grasso K4020x110

